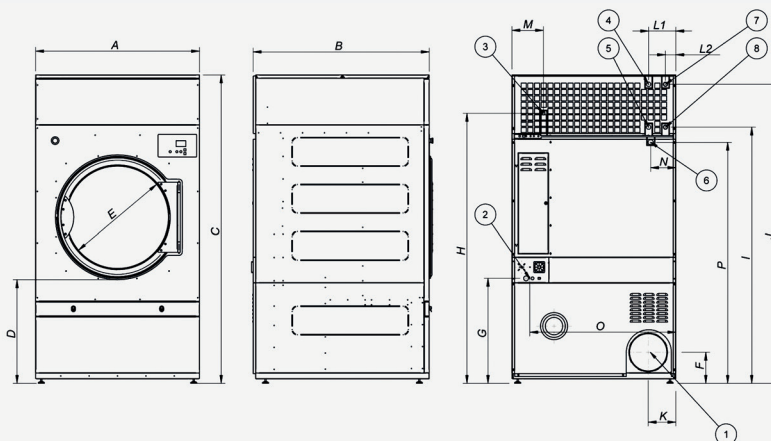


TECHNICAL DATA	UNIT.	DTA/DTP-45 COMFORT	DTA/DTP-60 COMFORT	DTA/DTP-80 COMFORT			
CAPACITY							
Capacity 1/18	Kg	50	67	83			
Capacity 1/20	Kg	45	60	75			
Hourly Output COMFORT	Kg/h	90	120	150			
Evaporation capacity COMFORT	l/h	46,6	62,5	76,7			
DRUM							
Ø Drum	mm	1.225	1.225	1.225			
Ø Door	mm	802	802	802			
Door center height	mm	1.275	1.275	1.275			
Load hole bottom height	mm	874	874	874			
Drum length	mm	760	1.020	1.252			
Drum volume	l	896	1.202	1.500			
POWER							
Drum motor power	Kw	0,75	1,1	1,5			
Fan Motor Power COMFORT	Kw	1,1	1,1	1,1			
Total Installed power COMFORT	Kw	55,9	74,25	74,65			
Electric Heating (Installed power)	Kw	54	72	72			
Gas heating (installed Power) in KW	Kw	60	90	120			
Gas heating (installed el. power) COMFORT	Kw	1,9	2,25	2,65			
Steam heating (Steam Power KW)	Kw	91,3	128	128			
Steam heating (installed el. power) COMFORT	Kw	1,9	2,25	2,65			
CONNECTIONS							
		ELECTRICAL	STEAM / GAS	ELECTRICAL	STEAM / GAS	ELECTRICAL	STEAM / GAS
Tension 230V - I + N + T	Nº x mm2 / A	-	-	-	-	-	-
Tension 230V - III + T	Nº x mm2 / A	-	4 x 1,5 / 20A	-	4 x 1,5 / 32A	-	4 x 1,5 / 32A
Tension 400V - III + N + T	Nº x mm2 / A	5 x 35 / 100A	5 x 1,5 / 20A	5 x 50 / 125A	5 x 1,5 / 32A	5 x 50 / 125A	5 x 1,5 / 32A
Ø Gas inlet	BSP	3/4"		3/4"		3/4"	
Ø Steam inlet	BSP	1"		1"		1"	
Ø Condensed (Steam models)	BSP	1"		1"		1"	
DIMENSIONS / PACKING DIMENSIONS							
Width / Width	mm	1.270/1.330		1.270/1.330		1.270/1.330	
Depth / Depth	mm	1.085/1.185		1.345/1.445		1.577/1.677	
Height / Height	mm	2.380/2.085		2.380/2.085		2.380/2.085	
Height without heating battery	mm	1.950		1.950		1.950	
Net weight / Gross weight	Kg	395/430		529/575		657/715	
OTHERS							
Max airflow COMFORT	m3/h	3.000		3.000		3.000	
Ø Fume exhaust	mm	300		300		300	
Sound level COMFORT	dB	67		67		67	



01. Fumes outlet
02. Electrical connection
03. Gas connection
04. Steam connection DTA/DTP-45
05. Condensation outlet DTA/DTP-45
06. Anti fire water valve
07. Steam connection DTA/DTP-60-80
08. Condensation outlet DTA/DTP-60-80

	A	B	C	D	E	F	G	H	I	J	K	L1	L2	M	N	O	P
DTA/DTP-45	1.270	1.085	2.380	813	802	240	813	2.088	1.981	2.314	214	211	-	244	195	1.132	1.865
DTA/DTP-60	1.270	1.345	2.380	813	802	240	813	2.088	1.981	2.314	214	-	80	244	195	1.132	1.865
DTA/DTP-80	1.270	1.577	2.380	813	802	240	813	2.088	1.981	2.314	214	-	80	244	195	1.132	1.865