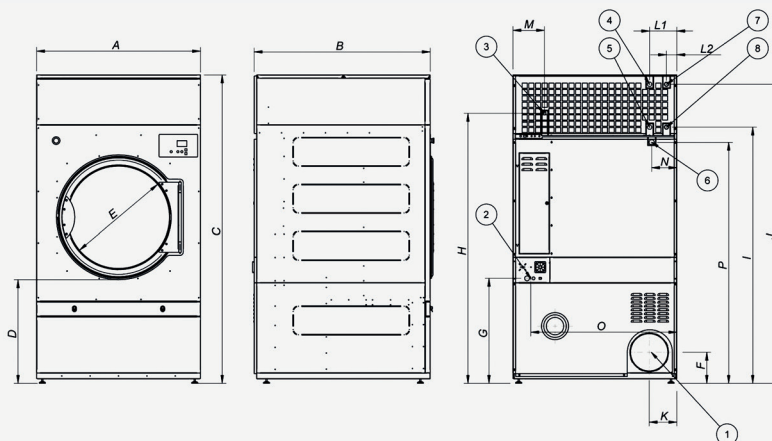


TECHNICAL DATA	UNIT.	DTP-45 ECO-ENERGY	DTP-60 ECO-ENERGY	DTP-80 ECO-ENERGY			
CAPACITY							
Capacity 1/18	Kg	50	67	83			
Capacity 1/20	Kg	45	60	75			
Hourly Output ECO-ENERGY	Kg/h	117	156	195			
Evaporation capacity ECO-ENERGY	l/h	60,6	81,2	99,7			
DRUM							
Ø Drum	mm	1.225	1.225	1.225			
Ø Door	mm	802	802	802			
Door center height	mm	1.275	1.275	1.275			
Load hole bottom height	mm	874	874	874			
Drum length	mm	760	1.020	1.252			
Drum volume	l	896	1.202	1.500			
POWER							
Drum motor power	Kw	0,75	1,1	1,5			
Fan Motor Power ECO-ENERGY	Kw	2,2	2,2	2,2			
Total Installed power ECO-ENERGY	Kw	57	75,35	75,75			
Electric Heating (Installed power)	Kw	54	72	72			
Gas heating (installed Power) in KW	Kw	60	90	120			
Gas heating (installed el. power) ECO-ENERGY	Kw	3	3,35	3,75			
Steam heating (Steam Power KW)	Kw	91,3	128	128			
Steam heating (installed el. power) ECO-ENERGY	Kw	3	3,35	3,75			
CONNECTIONS							
		ELECTRICAL	STEAM / GAS	ELECTRICAL	STEAM / GAS	ELECTRICAL	STEAM / GAS
Tension 230V - I + N + T	Nº x mm2 / A	-	-	-	-	-	-
Tension 230V - III + T	Nº x mm2 / A	-	4 x 1,5 / 20A	-	4 x 1,5 / 32A	-	4 x 1,5 / 32A
Tension 400V - III + N + T	Nº x mm2 / A	5 x 35 / 100A	5 x 1,5 / 20A	5 x 50 / 125A	5 x 1,5 / 32A	5 x 50 / 125A	5 x 1,5 / 32A
Ø Gas inlet	BSP	3/4"		3/4"		3/4"	
Ø Steam inlet	BSP	1"		1"		1"	
Ø Condensed (Steam models)	BSP	1"		1"		1"	
DIMENSIONS / PACKING DIMENSIONS							
Width / Width	mm	1.270/1.330		1.270/1.330		1.270/1.330	
Depth / Depth	mm	1.085/1.185		1.345/1.445		1.577/1.677	
Height / Height	mm	2.380/2.085		2.380/2.085		2.380/2.085	
Height without heating battery	mm	1.950		1.950		1.950	
Net weight / Gross weight	Kg	395/430		529/575		657/715	
OTHERS							
Max airflow ECO-ENERGY	m3/h	4500		4500		4500	
Ø Fume exhaust	mm	300		300		300	
Sound level ECO-ENERGY	dB	67		67		67	



01. Fumes outlet
02. Electrical connection
03. Gas connection
04. Steam connection DTP-45
05. Condensation outlet DTP-45
06. Anti fire water valve
07. Steam connection DTP-60-80
08. Condensation outlet DTP-60-80

	A	B	C	D	E	F	G	H	I	J	K	L1	L2	M	N	O	P
DTP-45	1.270	1.085	2.380	813	802	240	813	2.088	1.981	2.314	214	211	-	244	195	1.132	1.865
DTP-60	1.270	1.345	2.380	813	802	240	813	2.088	1.981	2.314	214	-	80	244	195	1.132	1.865
DTP-80	1.270	1.577	2.380	813	802	240	813	2.088	1.981	2.314	214	-	80	244	195	1.132	1.865